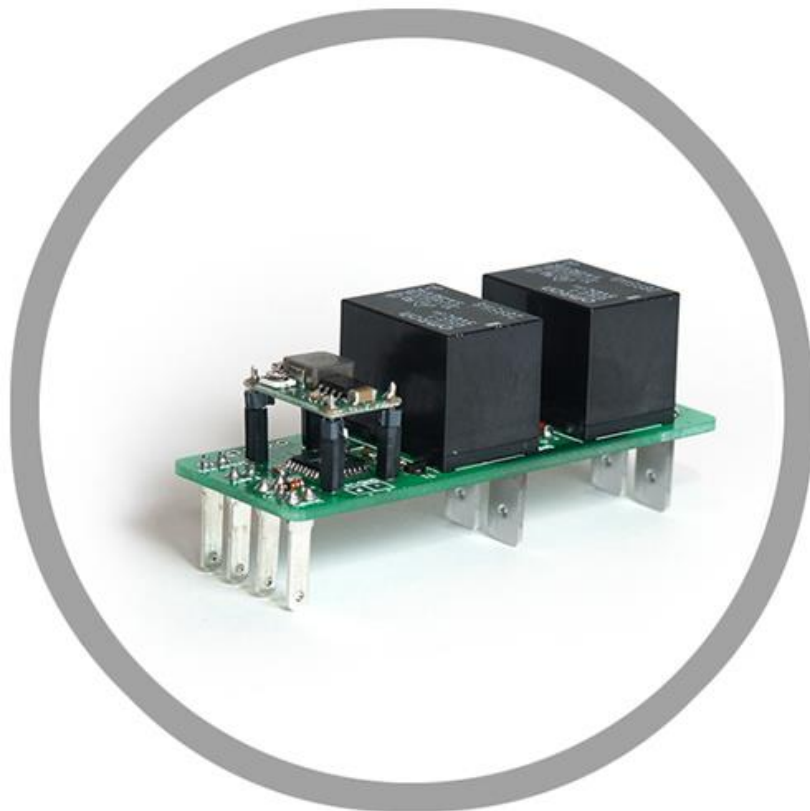


INSTALLATION INSTRUCTIONS AND OPERATING MANUAL

by



E30 Innovative Goods

For

E30 Intelligent Wipers

PACKAGE CONTENTS

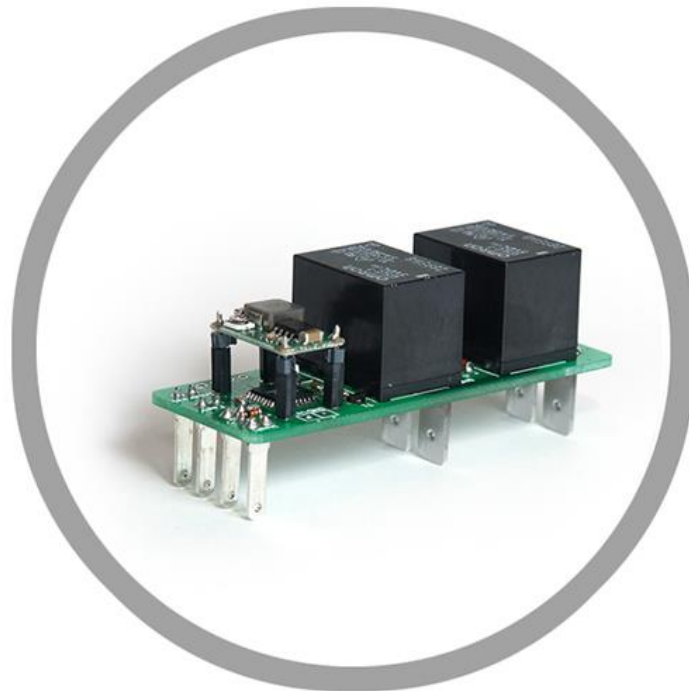
- 1. Intelligent Wipers relay 1x

RECOMMENDED but NOT INCLUDED

- 1. Original E30 wipers relay (working or not)

TABLE OF CONTENTS

OPERATING MANUAL 3
INSTALLATION INSTRUCTIONS 4



1. Intelligent wipers relay

OPERATING MANUAL

1. WHAT DOES YOUR INTELLIGENT WIPERS RELAY DO?

It is a programmable wiper interval control relay. This is a plug&play relay that brings your wipers some flexibility. The SLOW and FAST handle positions work the same. The INTERVAL position is where it happens. You will be able to adjust the interval between sequential wipes by a simple move of the handle. An additional feature that is added is a double wipe 5 seconds after the use of WASH function, to remove any remaining water on the windscreen!

You can now skip to INSTALLATION INSTRUCTIONS section and return when you are done.

2. HOW TO OPERATE YOUR WIPERS

a. WASH

- i. When wash function is activated, the wipers begin to wipe and continue wiping until you release the wash function. Aprox. 5 seconds after you release the wash function a double wipe clears any remaining water on the windscreen.

b. INTERVAL

- i. When interval function is activated for the first time after car startup, a default 6 seconds interval between wipes is active.
- ii. To change the interval time, you need to move the wiper stalk to OFF position (1st move), wait some time and move the stalk back to interval position (2nd move). The time between the two moves is the new interval time.
- iii. **If you leave the stalk on the OFF position for more than 30 seconds, the default value of 6 seconds is applied.**
- iv. The interval time can be set to values from 2 to 30 seconds. You can change the interval time as many times as needed.

c. SLOW and FAST

- i. This functions are unchanged and operate as you are used to.

ENJOY!

INSTALLATION INSTRUCTIONS

Make sure you have your phone turned off, kids and wife locked away in a safe place so nothing can distract you. 😊

Make sure you follow the instructions step by step.

1. REMOVE THE OLD WIPER RELAY
 - a. Open the hood
 - b. Remove the fuse box cover
 - c. Remove the old wiper relay

2. DISASSEMBLE THE OLD RELAY
 - a. Take a flat screwdriver and gently pry out the black plastic locking plate from the bottom of the relay.
 - b. Remove the insides of the relay. Store it together with the black plastic locking plate.
 - c. You are now left with the black plastic cover.

3. ASSEMBLE THE INTELLIGENT WIPER RELAY
 - a. Take the intelligent wiper relay and place it inside the plastic cover with the pins looking out.
 - b. Make sure the PCB locks in place

4. INSTALL THE NEW RELAY
 - a. Install the new intelligent wiper relay on its place
 - b. Reinstall the fuse box cover
 - c. Close the hood

5. THE INSTALLATION IS NOW COMPLETE! 😊
 - a. You can now wait for the first rain and do a test drive with your E30.

Before that, make sure you release your wife and kids and turn on your phone.